

La Alborada de la Esperanza

The Dawn of Hope



composed by José L. Elizondo

V#20250515

La Alborada de la Esperanza

dedicated to Sébastien Hurtaud

by José L. Elizondo

Adagio molto espressivo (♩ = c. 58-66)

Alto Sax

Cello

pp mp sweet, delicate, light, legato

mp sweet, delicate, light, legato

Detailed description: This block contains the first four measures of the piece. The Alto Sax part is in treble clef with a key signature of three sharps (F#, C#, G#) and a 4/4 time signature. The Cello part is in bass clef with the same key signature and time signature. Both parts feature a melodic line with slurs and ties, and a bass line with eighth-note patterns. Dynamics range from pianissimo (pp) to mezzo-piano (mp). The instruction 'sweet, delicate, light, legato' is written above the sax part.

poco rit.

Detailed description: This block contains measures 5 through 8. The musical notation continues with similar melodic and bass line patterns. A 'poco rit.' (ritardando) instruction is placed above the sax part at the end of measure 8. The dynamics remain consistent with the previous section.

A a tempo

mp cantabile, expressive, gradually becoming brighter

mp warm, gentle

Detailed description: This block contains measures 9 through 12, marked with a box 'A' and 'a tempo'. The sax part has a dynamic of mezzo-piano (mp) and is described as 'cantabile, expressive, gradually becoming brighter'. The cello part has a dynamic of mezzo-piano (mp) and is described as 'warm, gentle'. The tempo is marked 'a tempo'.

mf

Detailed description: This block contains measures 13 through 16. The sax part has a dynamic of mezzo-forte (mf). The cello part continues with its melodic and bass line patterns. The tempo remains 'a tempo'.

more introspective

Detailed description: This block contains measures 17 through 20. The sax part has a dynamic of mezzo-forte (mf). The cello part continues with its melodic and bass line patterns. The instruction 'more introspective' is written below the cello part.

B

21 *mp* mournful, but serene and reverent

mf expressive, almost melancholic and tearful

25

C

29 *mf* with more emotion, expressive, but still very noble

mp sotto voce, reverent *mf*

33 like a lament becoming brighter and more hopeful

poco rit. -----

D

Un poco più mosso

37 *f* broad and open, luminous, reinvigorated

f luminous and open, always light

41

E

45

49

tenderly *stately, noble*

mf tenderly *f stately, noble*

53

mp

mp

allargando

57

tender, sweet, delicate

p

pizz.

tender, sweet, delicate

La Alborada de la Esperanza

dedicated to Sébastien Hurtaud

by José L. Elizondo

Adagio molto espressivo (♩ = c. 58-66)

pp < mp sweet, delicate, light, legato

poco rit.

5

Detailed description: This block contains the first five measures of the piece. It is written in treble clef with a key signature of three sharps (F#, C#, G#) and a 4/4 time signature. The music begins with a half rest, followed by a series of eighth and quarter notes, mostly beamed together. A dashed line above the staff indicates a long, sweeping slur that spans across measures 1 through 5. The dynamic marking starts at *pp* and gradually increases to *mp*. The performance instruction is "sweet, delicate, light, legato". A "poco rit." marking is placed above the staff towards the end of the first line.

A *a tempo*

9 mp cantabile, expressive, gradually becoming brighter

Detailed description: This block contains measures 9 through 12. The tempo is marked "a tempo". The music continues with a melodic line of quarter and eighth notes, some beamed together. A slur covers measures 9-12. The dynamic marking is *mp*. The performance instruction is "cantabile, expressive, gradually becoming brighter".

13 mf

Detailed description: This block contains measures 13 through 16. The music features a melodic line with some chromaticism. A slur covers measures 13-16. The dynamic marking is *mf*.

17 mp

Detailed description: This block contains measures 17 through 21. The music continues with a melodic line. A slur covers measures 17-21. The dynamic marking is *mp*. There is a crescendo hairpin leading to the *mp* marking.

B

22 mournful, but serene and reverent

Detailed description: This block contains measures 22 through 25. The music is more sparse, with fewer notes. A slur covers measures 22-25. The performance instruction is "mournful, but serene and reverent".

26

Detailed description: This block contains measures 26 through 29. The music continues with a melodic line. A slur covers measures 26-29.

C

30 mf with more emotion, expressive, but still very noble

Detailed description: This block contains measures 30 through 33. The music features a melodic line with some chromaticism. A slur covers measures 30-33. The dynamic marking is *mf*. The performance instruction is "with more emotion, expressive, but still very noble".

poco rit. -----

34 *like a lament* *becoming brighter and more hopeful* ***f***

D **Un poco più mosso**

38 *broad and open, luminous, reinvigorated*

42

E 46

50 *tenderly* *stately, noble*

54 ***mp***

allargando -----

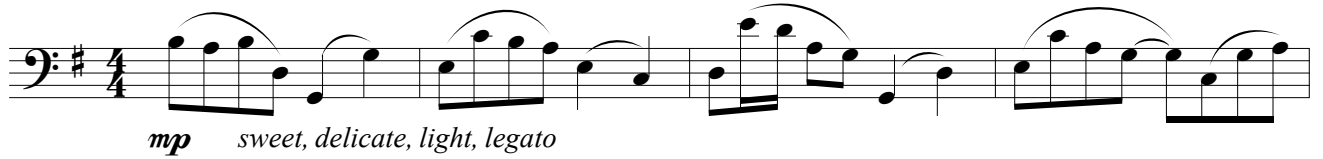
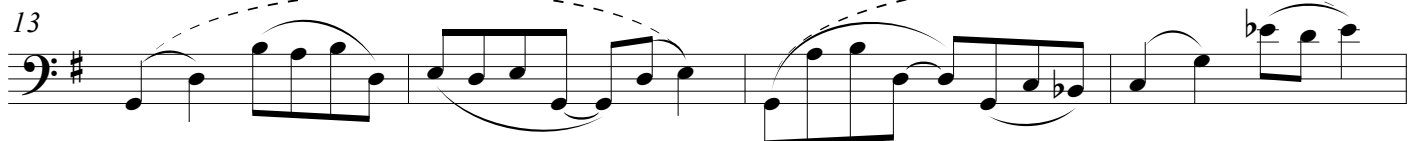
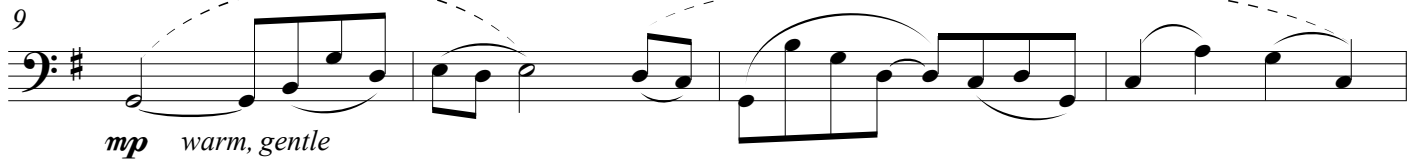
57 *tender, sweet, delicate* ***p***

La Alborada de la Esperanza

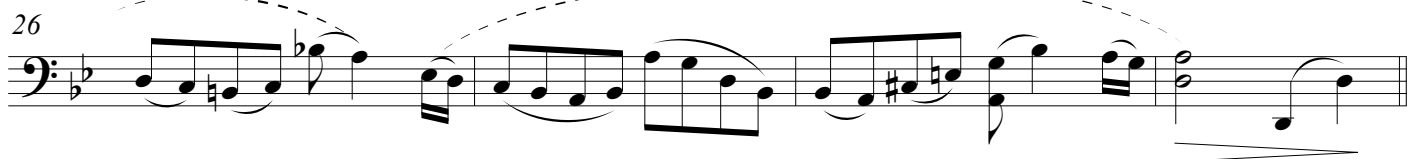
dedicated to Sébastien Hurtaud

by José L. Elizondo

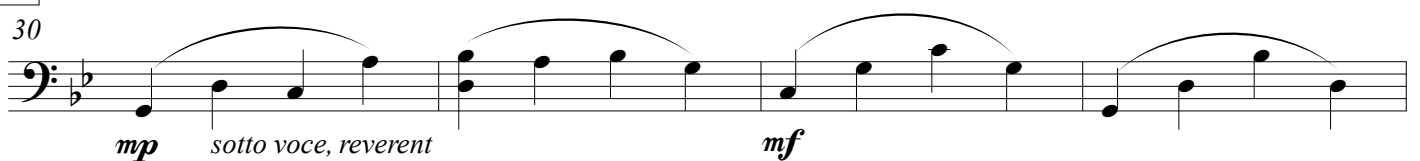
Adagio molto espressivo (♩ = c. 58-66)

A *a tempo*

B



C



poco rit. -----

34

Musical notation for measures 34-37 in bass clef, key of B-flat major. The music features a melodic line with various articulations including slurs and accents.

D Un poco più mosso

38

Musical notation for measures 38-41 in bass clef, key of D major. The music features a melodic line with various articulations including slurs and accents.

f luminous and open, always light

42

Musical notation for measures 42-45 in bass clef, key of D major. The music features a melodic line with various articulations including slurs and accents.

E

46

Musical notation for measures 46-49 in bass clef, key of D major. The music features a melodic line with various articulations including slurs and accents.

50

Musical notation for measures 50-53 in bass clef, key of D major. A dashed line above the staff indicates a phrase that spans across measures 50 and 51.

mf tenderly

f stately, noble

54

Musical notation for measures 54-57 in bass clef, key of D major. The music features a melodic line with various articulations including slurs and accents.

mp

allargando -----

58

Musical notation for measures 58-61 in bass clef, key of D major. The music features a melodic line with various articulations including slurs and accents.

tender, sweet, delicate

pizz.