

# La Alborada de la Esperanza

## The Dawn of Hope



composed by José L. Elizondo

V#20250515

Flute, Alto Flute, Harp

# La Alborada de la Esperanza

NOTE: Harp pedals shown in rectangular enclosure

dedicated to Sébastien Hurtaud

by José L. Elizondo

Adagio molto espressivo (♩ = c. 66)

*poco rit.* -----

Flute

Alto Flute

Harp

*mp* *legato, sweet, delicate, light*

E F# GA  
B C D

(A) *a tempo*

5

*mp* *cantabile, expressive, gradually becoming brighter*

*mf*

*mf* *cantabile, expressive, gradually becoming brighter* *subito mp*

*mp* *ethereal, gentle, smooth*

9

E<sub>b</sub>  
B<sub>b</sub>

13

*mp*

**B**  
18

*mp* *sotto voce, introspective, reverent*

*f* *expressive, almost melancholic and tearful*

*Left hand: light and delicate*

F#  
Bb

22

Bb

Ⓒ

26

*f* with more emotion, expressive, but still very noble

*mf* introspective, reverent but light

*mf* reverent, gentle, like the echo of distant church bells that ring the Gregorian chant "Dies Irae". The sound gradually becomes more luminous.

F#

29

like a lament

becoming brighter and more hopeful

Ⓓ Un poco più mosso

33

*f* broad and open, luminous, reinvigorated

*mf* broad and open, luminous, reinvigorated

E#  
B#

*f* broad and open, luminous, reinvigorated

37

C#

41

*f* reverent, yielding the melody to the piano

E

C#

D# D#

45

*tenderly* *stately, noble*

*tenderly* *stately, noble*

*mf* *stately, noble*

mf

49

*mp*

*deliberate, stately*

*play these harp chords as solid non-arpeggiated chords*

**E<sub>b</sub>  
B<sub>b</sub>**

*f*

*evoking the sound of distant bells, reverent, gentle, sweet*

52

*mp*

*mf*

*mf*

*mf*

*allargando* -----

54

*mp* *tender, sweet, delicate*

*p*

*mp* *tender, sweet, delicate*

*p*

**E<sub>b</sub> F<sub>b</sub>  
B<sub>b</sub> C<sub>b</sub>**

*p* *tender, sweet, delicate*

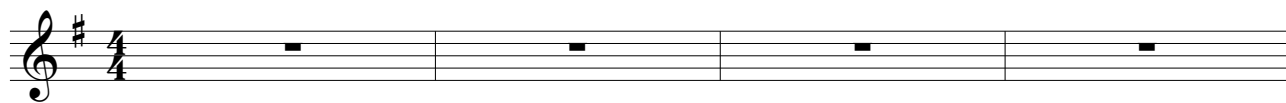
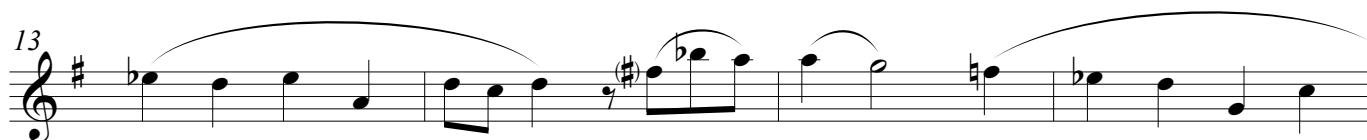
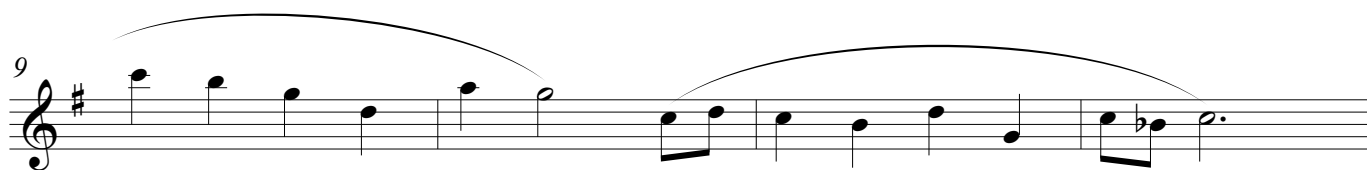
*pp*

## La Alborada de la Esperanza

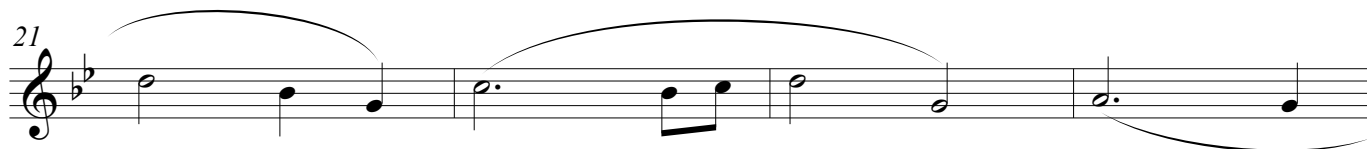
dedicated to Sébastien Hurtaud

by José L. Elizondo

Adagio molto espressivo (♩ = c. 66)

*poco rit.* -----A *a tempo**mp**mf**cantabile, expressive, gradually becoming brighter*

B

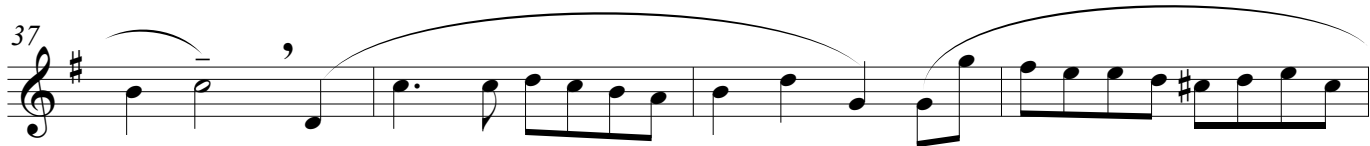
*mp**mournful, but serene and reverent*

C

*f**with more emotion, expressive, but still very noble**like a lament**becoming brighter and more hopeful*


**(D)** Un poco più mosso

33  *f* broad and open, luminous, reinvigorated

37 


**(E)**

41 

45  tenderly stately, noble

49  *mp*

*allargando* -----

53  *mf* *mp* tender, sweet, delicate *p*

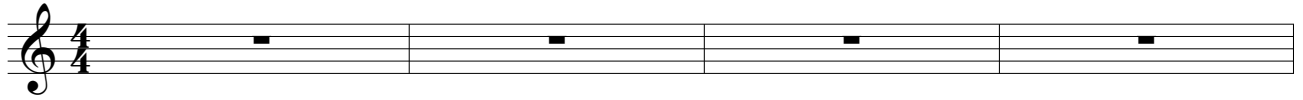
# La Alborada de la Esperanza

dedicated to Sébastien Hurtaud

by José L. Elizondo

Adagio molto espressivo (♩ = c. 66)

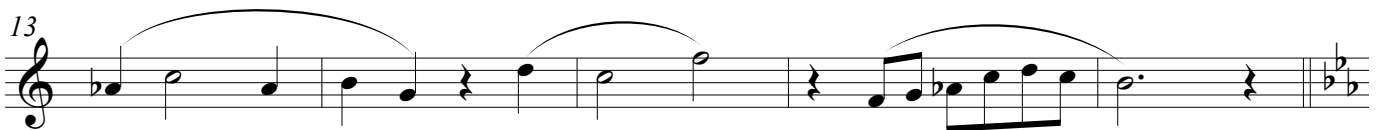
*poco rit.* -----,



**(A)** *a tempo*



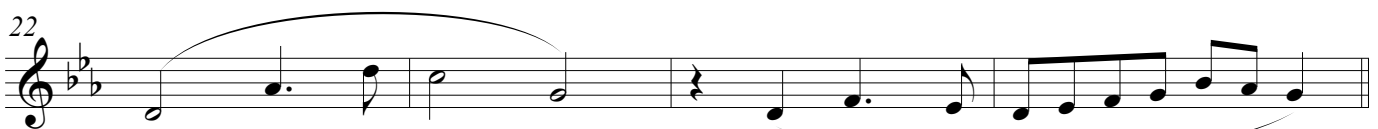
*mf*  *subito mp*  
*cantabile, expressive, gradually becoming brighter*



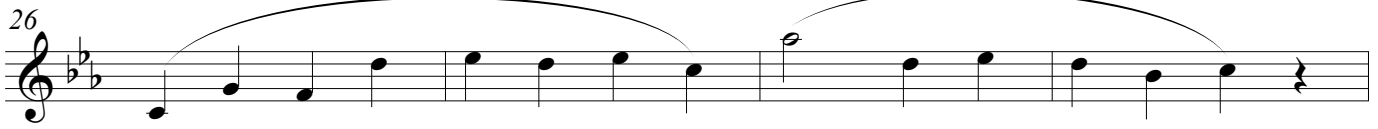
**(B)**



*mp* *sotto voce, introspective, reverent*



**(C)**



*mf* *introspective, reverent but light*



**(D)** Un poco più mosso

34

*mf* broad and open, luminous, reinvigorated

Musical staff for measure 34, starting with a treble clef and a common time signature. The melody begins with a dotted quarter note, followed by eighth and quarter notes. A slur covers the first two measures, and another slur covers the next two measures. The dynamics are marked *mf* with the instruction "broad and open, luminous, reinvigorated".

38

Musical staff for measure 38, continuing the melody from the previous staff. It features a series of eighth and quarter notes under a slur, ending with a quarter note and a half note. The dynamics are *mf*.

**(E)**

42

*f* reverent, yielding the melody to the piano

Musical staff for measure 42, featuring a series of half notes under a slur. The dynamics are marked *f* with the instruction "reverent, yielding the melody to the piano".

46

tenderly stately, noble

Musical staff for measure 46, starting with a dotted quarter note and a half note, followed by a series of eighth notes. The dynamics are marked "tenderly" and "stately, noble".

50

deliberate, stately *mp*

Musical staff for measure 50, featuring a series of quarter and eighth notes under a slur. The dynamics are marked "deliberate, stately" and *mp*.

*allargando*

53

*mf* *mp* *p* tender, sweet, delicate

Musical staff for measure 53, starting with a quarter rest followed by a series of eighth and quarter notes. The dynamics are marked *mf*, *mp*, and *p* with the instruction "tender, sweet, delicate".

Harp

# La Alborada de la Esperanza

NOTE: Harp pedals shown in rectangular enclosure

dedicated to Sébastien Hurtaud

by José L. Elizondo

**Adagio molto espressivo** (♩ = c. 66)

*poco rit.* -----

E F# G A  
B C D

Harp

*mp* legato, sweet, delicate, light

(A) *a tempo*

5

*mp* ethereal, gentle, smooth

E<sub>b</sub>  
B<sub>b</sub>

9

13

F#  
B#

B

18

*f* expressive, almost melancholic and tearful

Left hand: light and delicate

Bb

22

C

F#

26

*mf* reverent, gentle, like the echo of distant church bells that ring the Gregorian chant "Dies Irae". The sound gradually becomes more luminous.

E#  
B#

30

D

Un poco più mosso

34

*f* broad and open, luminous, reinvigorated

38 C#

42 C# D# D# *mf*

46 Eb Bb *stately, noble*

*play these harp chords as solid non-arpeggiated chords*

50 *f* *mf* *evoking the sound of distant bells, reverent, gentle, sweet*

*allargando* -----

53 E# Fb B# Cb *tender, sweet, delicate* *mp* *p* *pp*