

# La Alborada de la Esperanza

## The Dawn of Hope



composed by José L. Elizondo

V#20250515

## La Alborada de la Esperanza

dedicated to Sébastien Hurtaud

by José L. Elizondo

Adagio molto espressivo (♩ = c. 58-66)

*poco rit.*.....

Violin

Cello

Piano

*p* reverent, introspective, like a mantra

*mp* legato, sweet, delicate, light

**A** *a tempo*

5

*mf* cantabile, expressive, gradually becoming brighter

*mp* cantabile, espressivo

5

*mp* ethereal, gentle, smooth

9

9

13

more introspective

more introspective

Detailed description: This system shows measures 13 to 15 for the Violin and Cello parts. The Violin part (top staff) begins with a melodic line in G major, marked 'more introspective'. It features a long slur over measures 13-15 and a dashed line indicating a breath mark. The Cello part (bottom staff) provides a harmonic accompaniment with a similar melodic contour, also marked 'more introspective'.

13

Detailed description: This system shows measures 13 to 15 for the Piano part. The right hand (top staff) has a melodic line with a long slur and a dashed line. The left hand (bottom staff) plays a steady accompaniment of quarter notes in G major.

16

**B**

*mp* yielding the melody to the piano  
mournful, but serene and reverent

*mp* introspective, sotto voce, reverent

Detailed description: This system shows measures 16 to 18 for the Violin and Cello parts. Measure 16 is marked with a box containing the letter 'B'. The Violin part (top staff) has a melodic line with a long slur and a dashed line. The Cello part (bottom staff) has a melodic line with a long slur and a dashed line. The dynamic is marked 'mp'.

16

*mf* expressive, almost melancholic and tearful

Left hand: light and delicate

Detailed description: This system shows measures 16 to 18 for the Piano part. The right hand (top staff) has a melodic line with a long slur and a dashed line. The left hand (bottom staff) plays a steady accompaniment of quarter notes in G major. The dynamic is marked 'mf'. A note below the left hand indicates 'Left hand: light and delicate'.

19

Detailed description: This system shows measures 19 to 21 for the Violin and Cello parts. The Violin part (top staff) has a melodic line with a long slur and a dashed line. The Cello part (bottom staff) has a melodic line with a long slur and a dashed line.

19

Detailed description: This system shows measures 19 to 21 for the Piano part. The right hand (top staff) has a melodic line with a long slur and a dashed line. The left hand (bottom staff) plays a steady accompaniment of quarter notes in G major.

22

Musical notation for measures 22-25, Violin and Cello parts. The Violin part features a melodic line with a long slur and a crescendo hairpin. The Cello part provides a harmonic accompaniment with a similar slur and crescendo.

22

Musical notation for measures 22-25, Piano part. The right hand has a melodic line with a slur and a crescendo hairpin. The left hand has a steady accompaniment of quarter notes.

C

26

*mf* introspective, sotto voce, reverent

Musical notation for measures 26-29, Violin and Cello parts. The Violin part is marked *mf* and is described as "introspective, sotto voce, reverent". The Cello part is marked *f* and is described as "with more emotion, expressive, but still very noble".

26

*mf* reverent, gentle, like the echo of distant church bells that ring the Gregorian chant "Dies Irae". The sound gradually becomes more luminous.

Musical notation for measures 26-29, Piano part. The right hand has a chordal accompaniment with a slur and a crescendo hairpin. The left hand has a steady accompaniment of quarter notes.

30

like a lament

becoming brighter and more hopeful

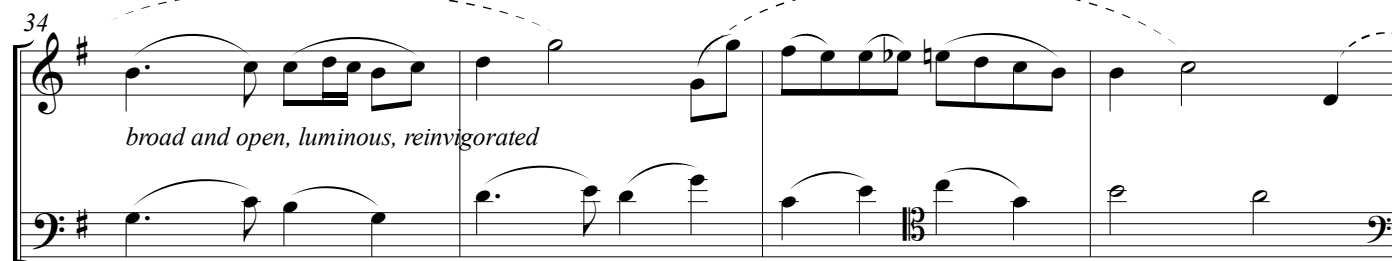
Musical notation for measures 30-33, Violin and Cello parts. The Violin part is marked *f* and is described as "like a lament" and "becoming brighter and more hopeful". The Cello part is also marked *f* and follows a similar expressive path.

30

Musical notation for measures 30-33, Piano part. The right hand has a chordal accompaniment with a slur and a crescendo hairpin. The left hand has a steady accompaniment of quarter notes.

**D** Un poco più mosso

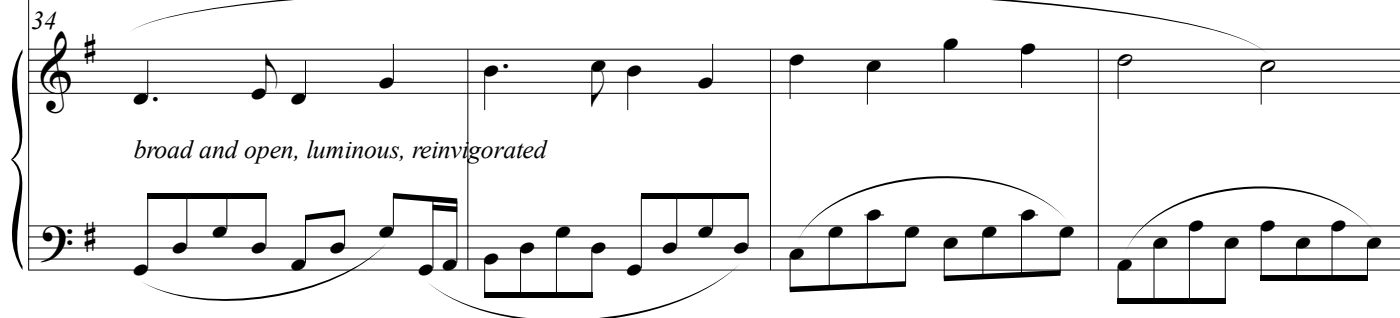
34



*broad and open, luminous, reinvigorated*

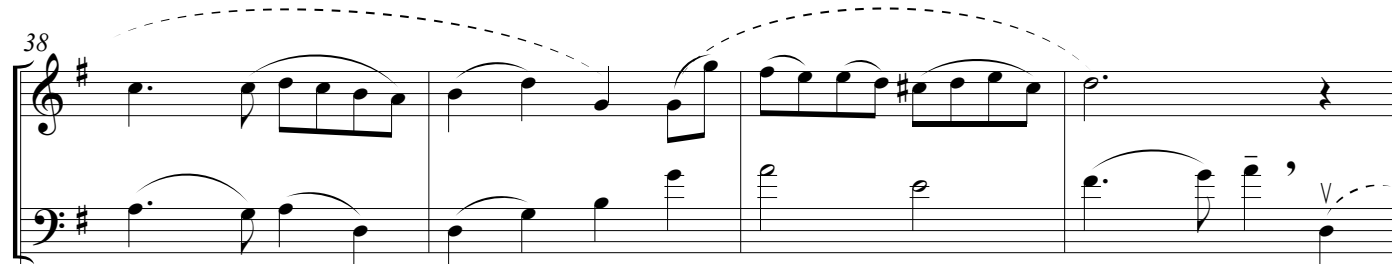
*mf* luminous and open, always light  
yielding the melody to the violin

34



*broad and open, luminous, reinvigorated*

38



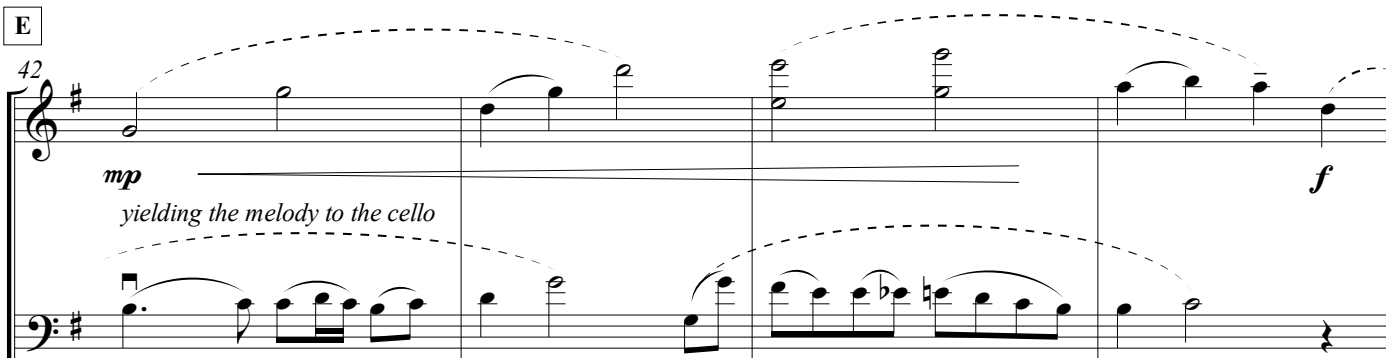
38



*f*

**E**

42

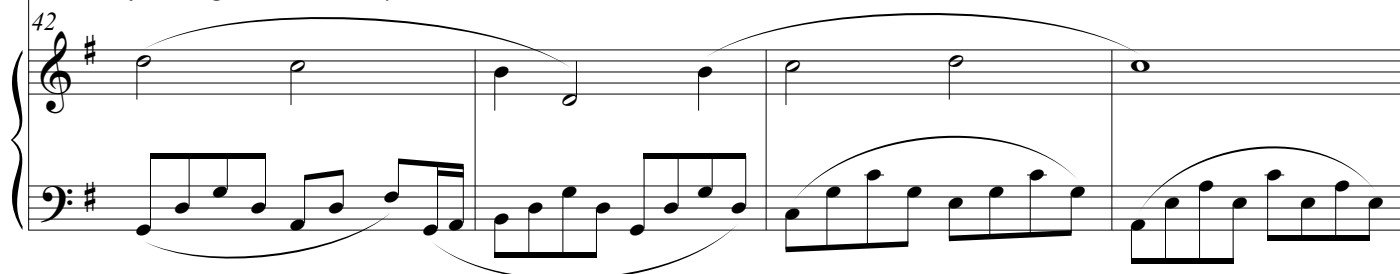


*mp* yielding the melody to the cello

*f*

*broad and open, luminous, reinvigorated*  
*featuring the main melody*

42



46

*broad, open, tender  
featuring the melody again*

*stately, noble*

46

*broad, open, tender  
yielding the melody to the violin*

*stately, noble*

*stately, noble*

50

*p*

*p*

*mp*

50

*p* *evoking the sound of distant bells, reverent, gentle, sweet*

*mp*

*allargando*

53

*tender, sweet, delicate*

*pizz.*

*subito mp*

*tender, sweet, delicate*

53

*mp*

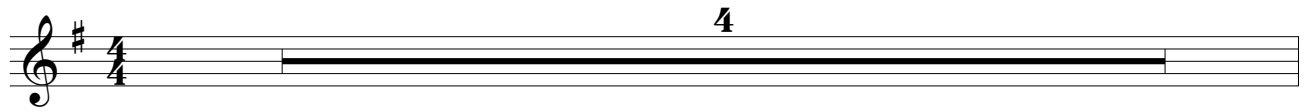
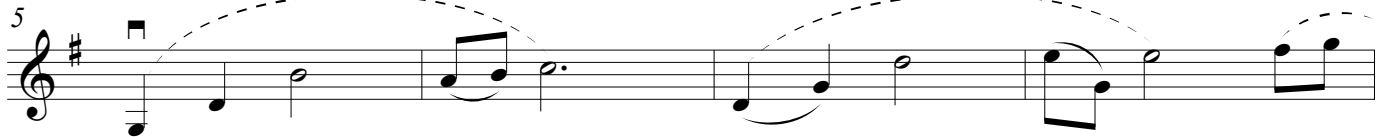
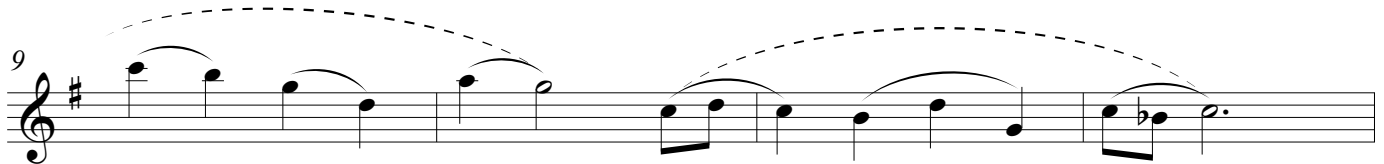
*tender, sweet, delicate*

## La Alborada de la Esperanza

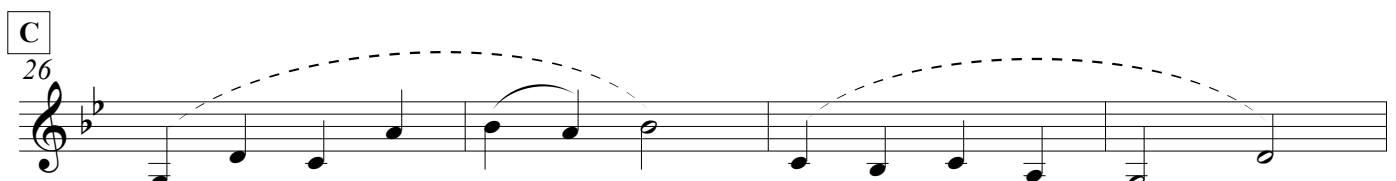
dedicated to Sébastien Hurtaud

by José L. Elizondo

Adagio molto espressivo (♩ = c. 58-66)

A *a tempo**mf* cantabile, expressive, gradually becoming brighter

more introspective

B *mp* yielding the melody to the piano  
mournful, but serene and reverentC *mf* introspective, sotto voce, reverent

30

**D** Un poco più mosso

33

*f* broad and open, luminous, reinvigorated

37

41

*mp*  
yielding the melody to the cello

45

*f* broad, open, tender  
featuring the melody again

48

stately, noble

*p*

*allargando*

52

*p*

tender, sweet, delicate

## La Alborada de la Esperanza

dedicated to Sébastien Hurtaud

by José L. Elizondo

Adagio molto espressivo (♩ = c. 58-66)

*poco rit.* -----

**III** **II** **III** **II** **III**

*p* reverent, introspective, like a mantra

**A** *a tempo*

5

*mp* cantabile, espressivo

9

13

*more introspective*

**B**

17

*mp* introspective, sotto voce, reverent

21

**C**

26

*f* with more emotion, expressive, but still very noble

30

*like a lament* *becoming brighter and more hopeful*

**D** Un poco più mosso

34

*mf* luminous and open, always light  
yielding the melody to the violin

37

41

**E**

*f* broad and open, luminous, reinvigorated  
featuring the main melody

45

broad, open, tender  
yielding the melody to the violin

stately, noble

49

*mp*

*allargando*

53

subito *mp*

tender, sweet, delicate

*pizz.*

## La Alborada de la Esperanza

dedicated to Sébastien Hurtaud

by José L. Elizondo

Adagio molto espressivo (♩ = c. 58-66)

*poco rit.* -----

Piano

*mp* legato, sweet, delicate, light

A *a tempo*

5

*mp* ethereal, gentle, smooth

9

13

**B**

17

*mf* expressive, almost melancholic and tearful

Left hand: light and delicate

21

**C**

25

*mf* reverent, gentle, like the echo of distant church bells that ring the Gregorian chant "Dies Irae". The sound gradually becomes more luminous.

29

**D** Un poco più mosso

33

*f* broad and open, luminous, reinvigorated

37

E

41

45

*stately, noble*

49

*p evoking the sound of distant bells, reverent, gentle, sweet*

*allargando*

53

*mp tender, sweet, delicate*