

LIMONCELLO

dedicated to Carlos Prieto



by José L. Elizondo

Limoncello

dedicated to Carlos Prieto

by José Elizondo

Vivace moderato e tranquillo (♩ = 160-168)

pizz.

Cello 1
p light, delicate

Cello 2
mp cantabile, sweet, delicate

arco

9
p sweet, very light and delicate, like a gentle breeze

pp

17
subito mp cantabile, expressive, sweet, delicate

poco rit.

25
mf

A *a tempo*

33
mf cantabile, expressive, sweet, delicate

mf cantabile, sweet, delicate

41

Two staves of music. The top staff is in treble clef and the bottom staff is in bass clef. The key signature has one sharp (F#). The music consists of eighth and sixteenth notes with various slurs and ties. A dashed line above the top staff indicates a long melodic phrase.

B
49

Two staves of music. The top staff is in bass clef and the bottom staff is in bass clef. The key signature has one sharp (F#). The music consists of eighth and sixteenth notes with various slurs and ties. A dashed line above the top staff indicates a long melodic phrase. Performance instructions are provided below the staves.

mp more reverent, a bit mysterious

mp light but reverent

57

Two staves of music. The top staff is in bass clef and the bottom staff is in bass clef. The key signature has one sharp (F#). The music consists of eighth and sixteenth notes with various slurs and ties. A dashed line above the top staff indicates a long melodic phrase. Performance instructions are provided below the staves.

mf opening up, becoming more luminous

mf

65

Two staves of music. The top staff is in bass clef and the bottom staff is in bass clef. The key signature has one sharp (F#). The music consists of eighth and sixteenth notes with various slurs and ties. A dashed line above the top staff indicates a long melodic phrase. Performance instructions are provided below the staves.

mp more reverent, a bit mysterious

mp light, delicate, like a gentle breeze

73

Two staves of music. The top staff is in bass clef and the bottom staff is in bass clef. The key signature has one sharp (F#). The music consists of eighth and sixteenth notes with various slurs and ties. A dashed line above the top staff indicates a long melodic phrase. Performance instructions are provided below the staves.

mf opening up, becoming more luminous

mf

C
81

Two staves of music. The top staff is in treble clef and the bottom staff is in bass clef. The key signature has one sharp (F#). The music consists of eighth and sixteenth notes with various slurs and ties. A dashed line above the top staff indicates a long melodic phrase. Performance instructions are provided below the staves.

f open, luminous, but noble and lyrical

f cantabile, open, sweet, luminous, lyrical

89

97

105

D

113

mf cantabile, expressive, sweet, delicate

mf molto cantabile, espressivo, sweet, delicate

121

E

129

mp more reverent, a bit mysterious

mf light but reverent *mp*

137 *mf*

mf

145 *mp* *mf*

mp *mf*

mp sweet, very light and delicate, like a gentle breeze *mf*

F 153 *f* *mf*

f open, luminous, but noble and lyrical

mf light, fluid, like a gentle wave in a lake

161 *ff* *f*

ff

f

rit.

167 *mf* *mf*

mf broad, comfortable, gentle, graceful

mf broad, comfortable, gentle, graceful

171 *mp* *mp* *pizz.* *pizz.*

mp sweet, light, very delicate

mp sweet, light, very delicate

pizz.

pizz.

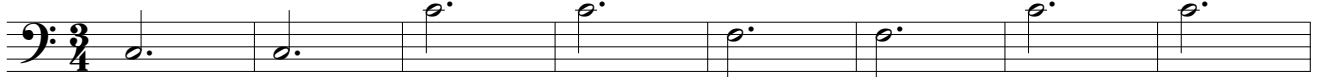
Limoncello

dedicated to Carlos Prieto

by José Elizondo

Vivace moderato e tranquillo (♩ = 160-168)

pizz.



p light, delicate

arco



p sweet, very light and delicate, like a gentle breeze



pp subito *mp* cantabile, expressive, sweet, delicate



poco rit.



A *a tempo*



mf cantabile, expressive, sweet, delicate



B

49

mp more reverent, a bit mysterious

55

mf opening up, becoming more luminous

61



mp more reverent, a bit mysterious

67

73

mf opening up, becoming more luminous

C

79

f open, luminous, but noble and lyrical

85

91

97

Musical staff 97-101 in 3/4 time. It begins with a treble clef and a key signature of one sharp (F#). The melody consists of eighth and quarter notes, mostly beamed together, with a long slur over the entire phrase. A dashed line above the staff indicates the overall contour of the phrase.

102

Musical staff 102-106 in 3/4 time. It begins with a treble clef and a key signature of one sharp (F#). The melody continues with eighth and quarter notes, mostly beamed together, with a long slur over the entire phrase. A dashed line above the staff indicates the overall contour of the phrase.

107

Musical staff 107-112 in 3/4 time. It begins with a bass clef and a key signature of one sharp (F#). The melody consists of eighth and quarter notes, mostly beamed together, with a long slur over the entire phrase. A dashed line above the staff indicates the overall contour of the phrase.

D

113

Musical staff 113-117 in 3/4 time. It begins with a bass clef and a key signature of one sharp (F#). The melody consists of eighth and quarter notes, mostly beamed together, with a long slur over the entire phrase. A dashed line above the staff indicates the overall contour of the phrase.

mf cantabile, expressive, sweet, delicate

118

Musical staff 118-122 in 3/4 time. It begins with a bass clef and a key signature of one sharp (F#). The melody consists of eighth and quarter notes, mostly beamed together, with a long slur over the entire phrase. A dashed line above the staff indicates the overall contour of the phrase.

123

Musical staff 123-128 in 3/4 time. It begins with a bass clef and a key signature of one sharp (F#). The melody consists of eighth and quarter notes, mostly beamed together, with a long slur over the entire phrase. A dashed line above the staff indicates the overall contour of the phrase.

E

129

Musical staff 129-134 in 3/4 time. It begins with a bass clef and a key signature of one sharp (F#). The melody consists of eighth and quarter notes, mostly beamed together, with a long slur over the entire phrase. A dashed line above the staff indicates the overall contour of the phrase. There are two 'v' marks above the first and eighth measures, indicating vibrato.

mp more reverent, a bit mysterious

135

Musical staff 135-139 in 3/4 time. It begins with a bass clef and a key signature of one sharp (F#). The melody consists of eighth and quarter notes, mostly beamed together, with a long slur over the entire phrase. A dashed line above the staff indicates the overall contour of the phrase. There is a 'v' mark above the first measure, indicating vibrato.

mf

140

Musical staff 140-144 in 3/4 time. It begins with a bass clef and a key signature of one sharp (F#). The melody consists of eighth and quarter notes, mostly beamed together, with a long slur over the entire phrase. A dashed line above the staff indicates the overall contour of the phrase.



145 *mp* *mf*

151 **F** *f* open, luminous, but noble and lyrical

157

163 *ff* *mf* broad, comfortable, gentle, graceful

rit.

169 *mp* *pizz.* sweet, light, very delicate

Limoncello

dedicated to Carlos Prieto

by José Elizondo

Vivace moderato e tranquillo (♩ = 160-168)

mp cantabile, sweet, delicate

9

17

25

mf *poco rit.*

A *a tempo*

33

mf cantabile, sweet, delicate

41

B

49

mp light but reverent

57

mf

E

129

mf light but reverent *mp*

137

mf

145

mp sweet, very light and delicate, like a gentle breeze *mf*

F

150

mf light, fluid, like a gentle wave in a lake

155

f

160

f

165

mf broad, comfortable, gentle, graceful

rit.

169

mp sweet, light, very delicate *pizz.*